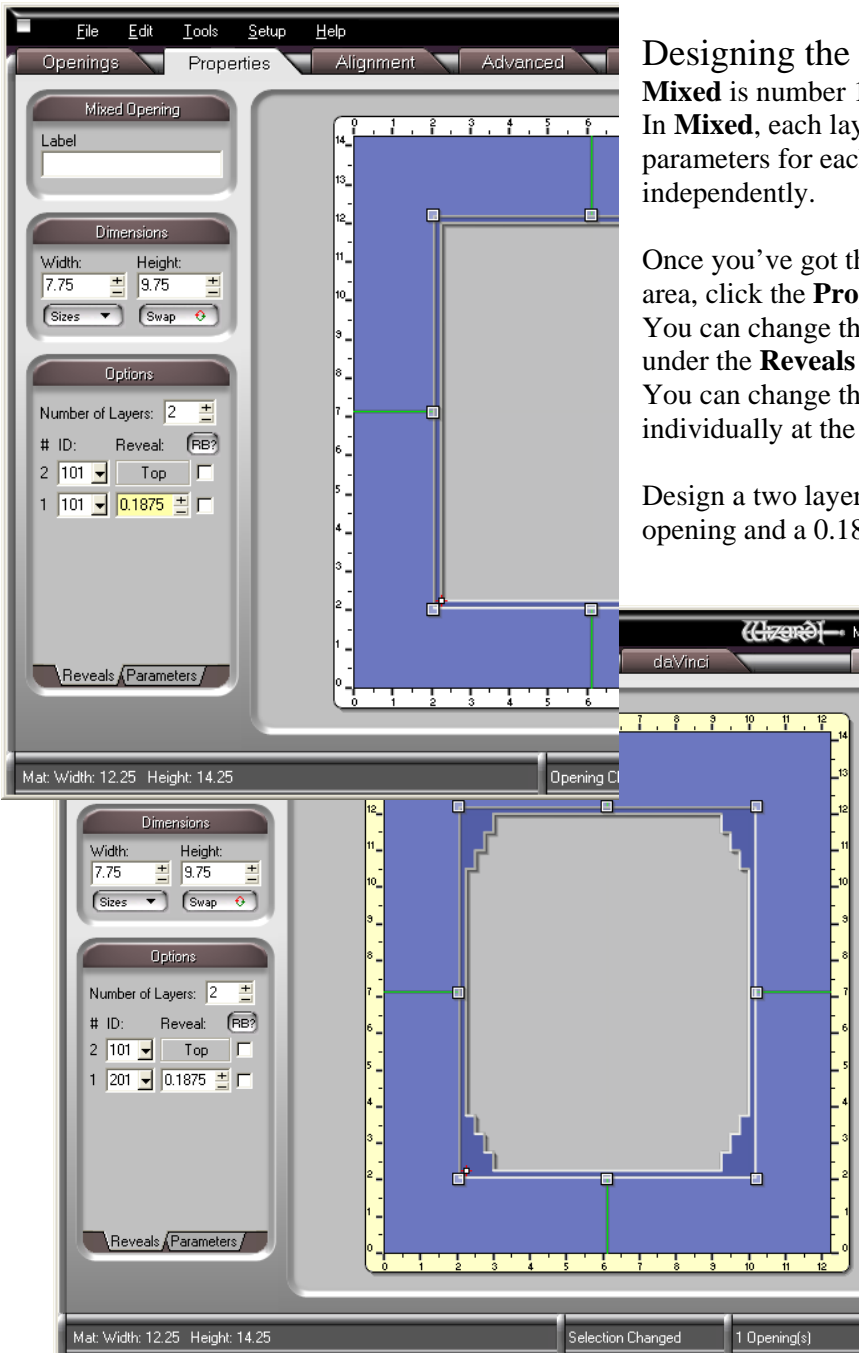




Wizard™ University

Templates Ideas Using Mixed

As attractive as normal double and triple mat designs are, there is potential for some truly unique work by making the top mat different from the bottom mat. Sometimes all the layers are radically different shapes, but the most useable designs are the ones where every layer is same shape but each layer has different parameters.



Designing the Mat

Mixed is number 106 in the template library. In **Mixed**, each layer can be different and the parameters for each layer can be adjusted independently.

Once you've got the **Mixed** template in the work area, click the **Properties** tab.

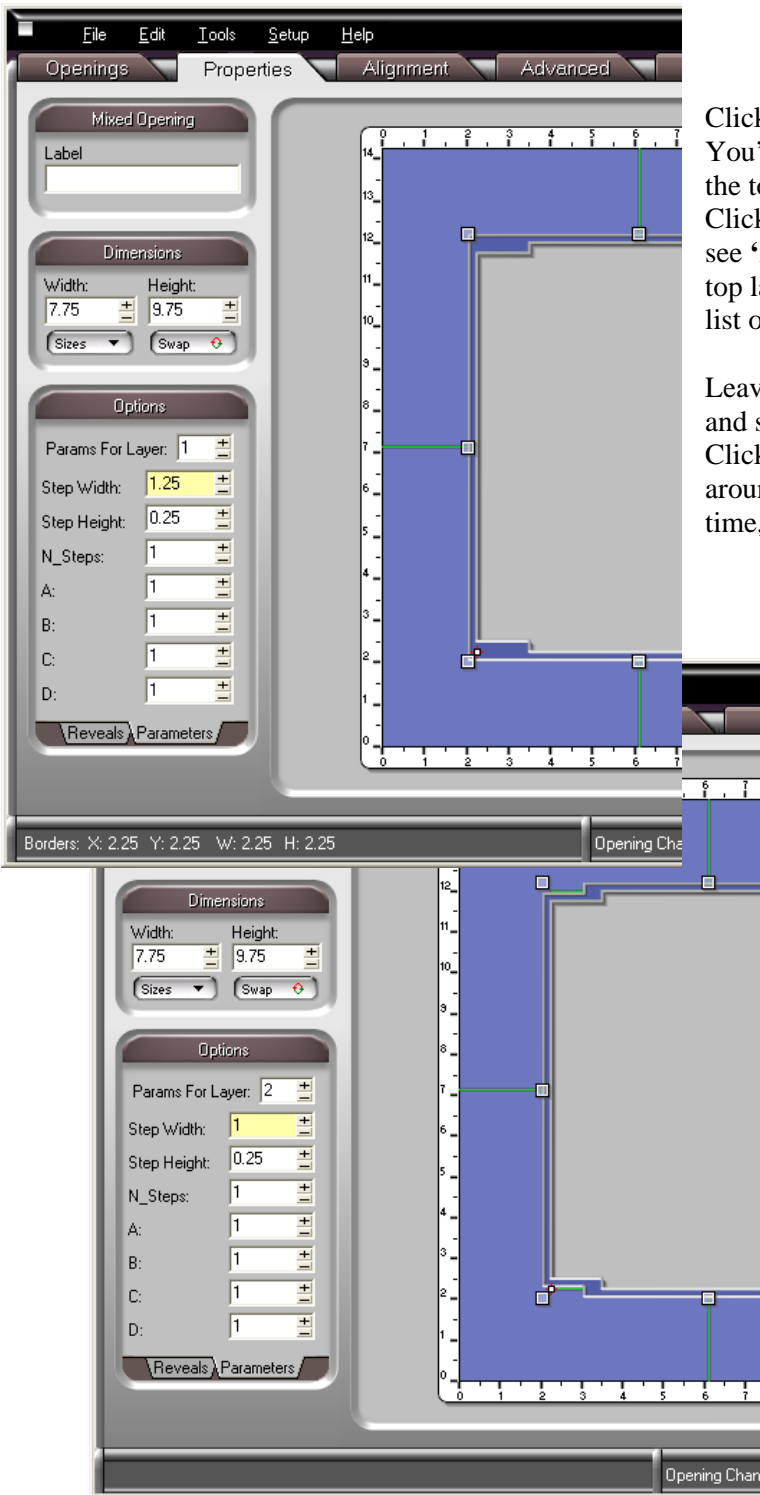
You can change the size and the number of layers under the **Reveals** tab at the bottom.

You can change the template for each layer individually at the lower left under the **#ID** column.

Design a two layer mat with a 7.75 x 9.75 inch opening and a 0.1875 inch reveal.

The **Mixed** template opens up with all layers as template 101. Click on the drop-down arrow beside the inner layer and the Template Library pops up.

Click on a template – 201, for instance - and the inner layer becomes that shape. Leave the top layer alone for the moment.



Click the **Parameters** tab at the bottom. You'll see a line that says **Params For Layer:** at the top. Click on the plus and minus buttons and you'll see **'no parameters used'** for the rectangle on the top layer. Click to layer 1 and you'll see a whole list of parameters for the inner mat.

Leave **A, B, C,** and **D** set to 1. Set **N_Steps** to 1, and set the **Step Height** to 0.25. Click the plus button next to **Step Width** until it's around an inch and a quarter. Notice that all the time, the top mat remains a rectangle.

Now, click the **Reveals** tab and change the top mat to template 201, also. Find the parameters table for the top mat and set all the values the same as the inner mat, but as you are clicking the plus button next to **Step Width**, stop at 1.

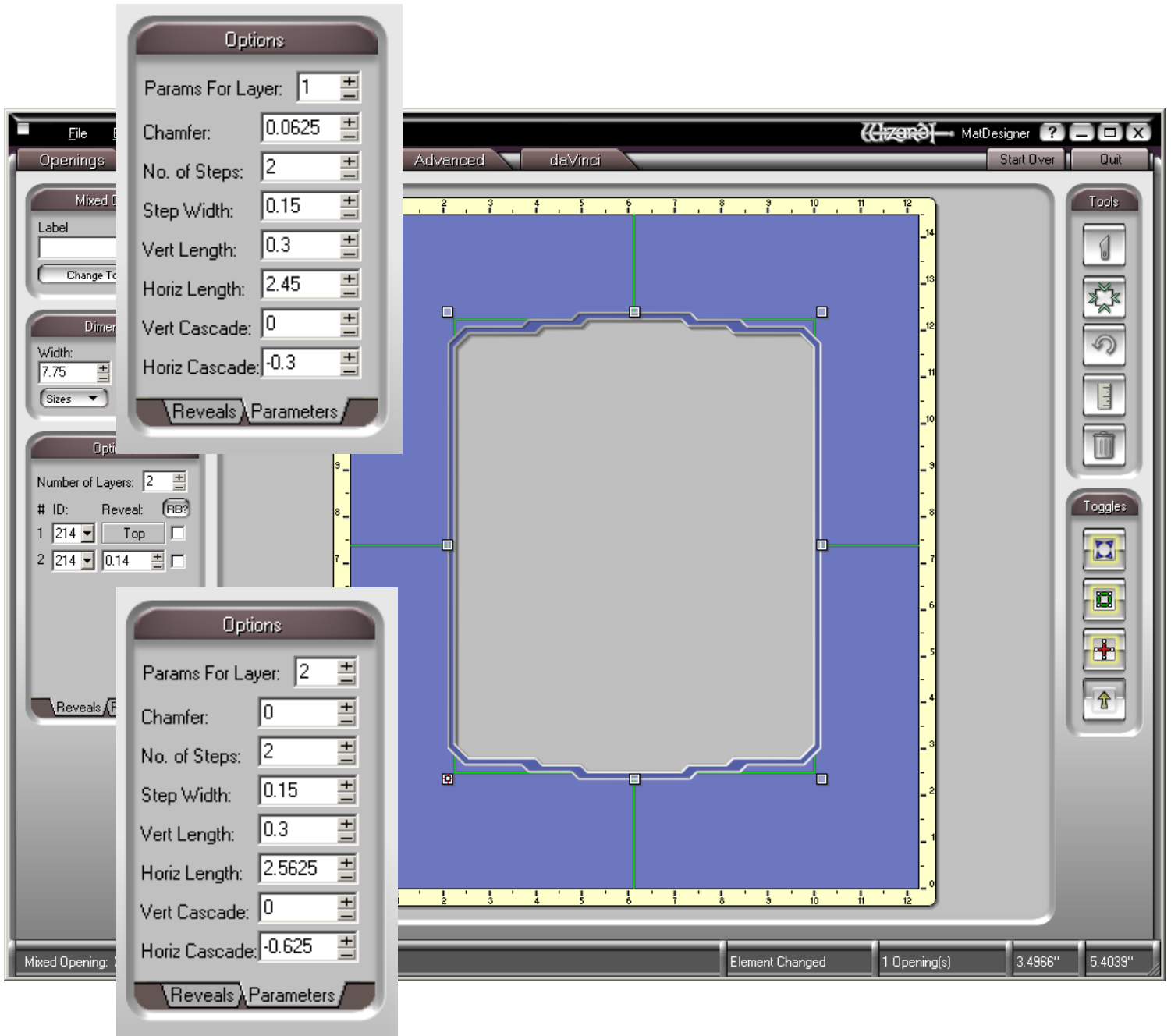
You will see that instead of the inner mat tracing around the perimeter evenly, there are those wide spots at the end of each offset.

This is about as simple as you can get. The everyday designs you will design using the Mixed template will not be too much more complicated than this.

The examples that follow use the newer templates from MatDesigner. Each illustration shows the final mat along with a table of the parameters for each layer. Once you find a few designs that you like, make sure they cut nicely, and save them as design variations - not as specific mats. For instance, name the above mat *201 Asian Variation*. This way, when you want to use this design again, load *201 Asian Variation*, change the opening size and the border widths to suit the new picture, and you will not need to fool around with changing the templates and adjusting the parameters to get the look you want.

By: Brian Wolf, CPF, GCF • Artistry Ambassador for Wizard International, Inc. Copyright October 08

4600 116th St SW • P.O. Box 66 • Mukilteo, WA 98275 • Phone (888) 855-3335 • Fax (425) 551-4350
Visit our Web site www.wizardint.com



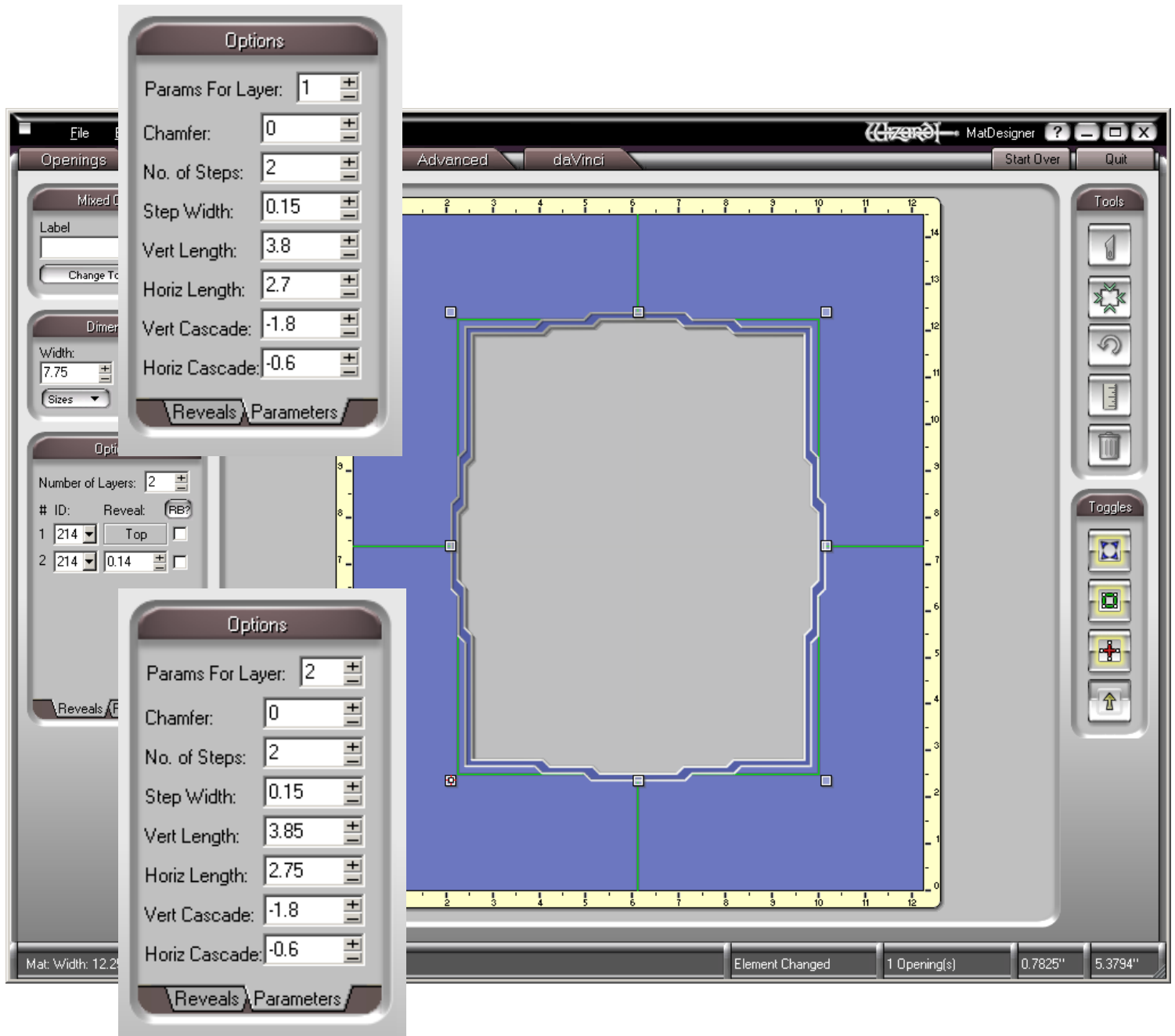
Both layers of this mat are 214 Angle Array. Note that just like the Template 201 example above, there are wide spots in the inner mat at the angled points. Also, like the previous example, the sides are clean.

When you cut mats that involve these obtuse angles, cut them from the front. You will be happier with the results. There is a **Cut From Front** check box on the Cut Preview screen under **Settings** on the left. Click it and the mat will cut from the front.

A variation here is to eliminate the angles at the corners. Take the design into PathTrace, explode the design, delete the angles lines at the corners, and rejoin the design.

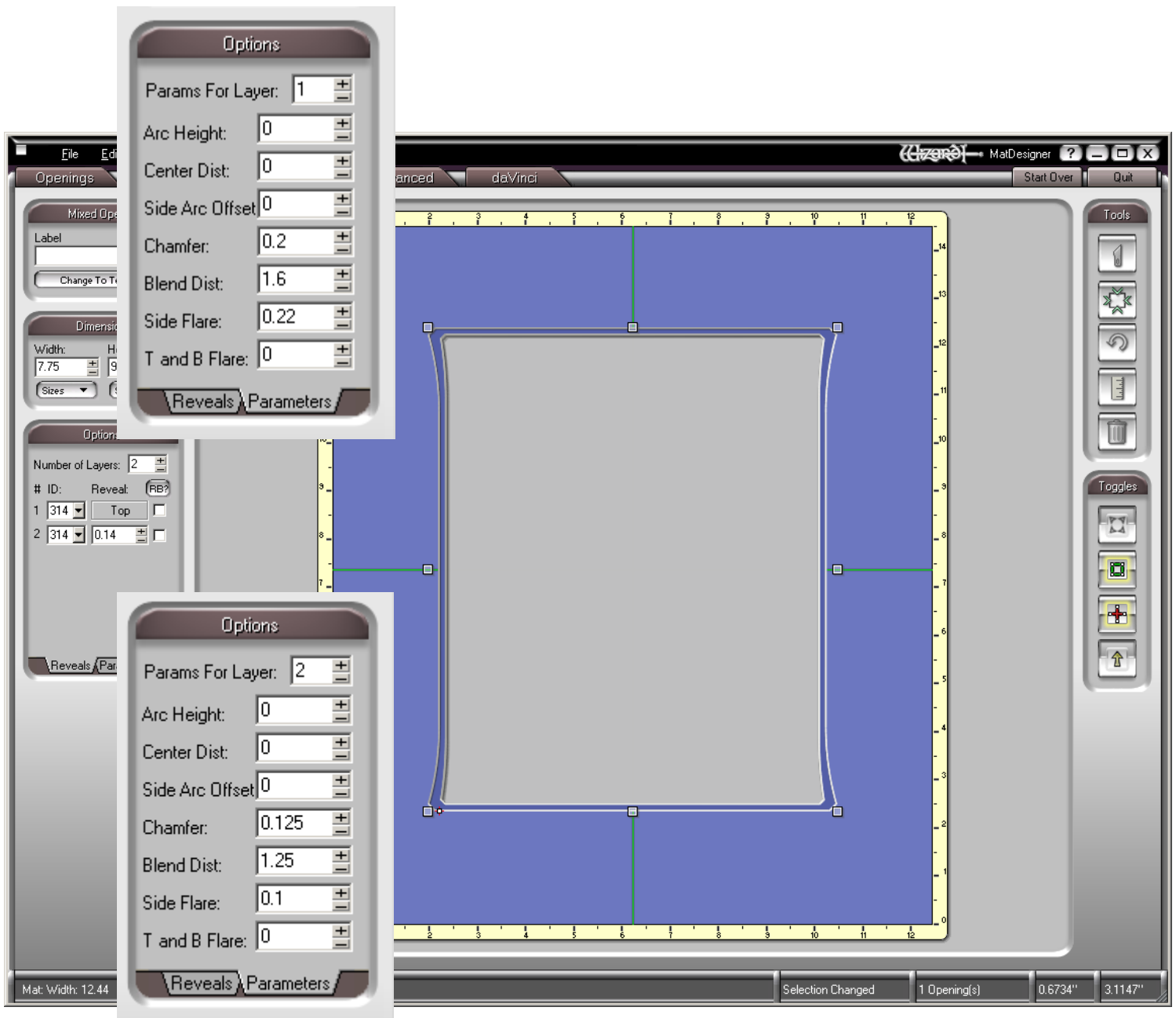
By: Brian Wolf, CPF, GCF • Artistry Ambassador for Wizard International, Inc. Copyright October 08

4600 116th St SW • P.O. Box 66 • Mukilteo, WA 98275 • Phone (888) 855-3335 • Fax (425) 551-4350
 Visit our Web site www.wizardint.com



Both layers of this mat are 214 Angle Array. Once again, there are wide spots at the angles points, but this time, there is decorative cutting on the sides, too.

As with the design above, cut this mat from the front.



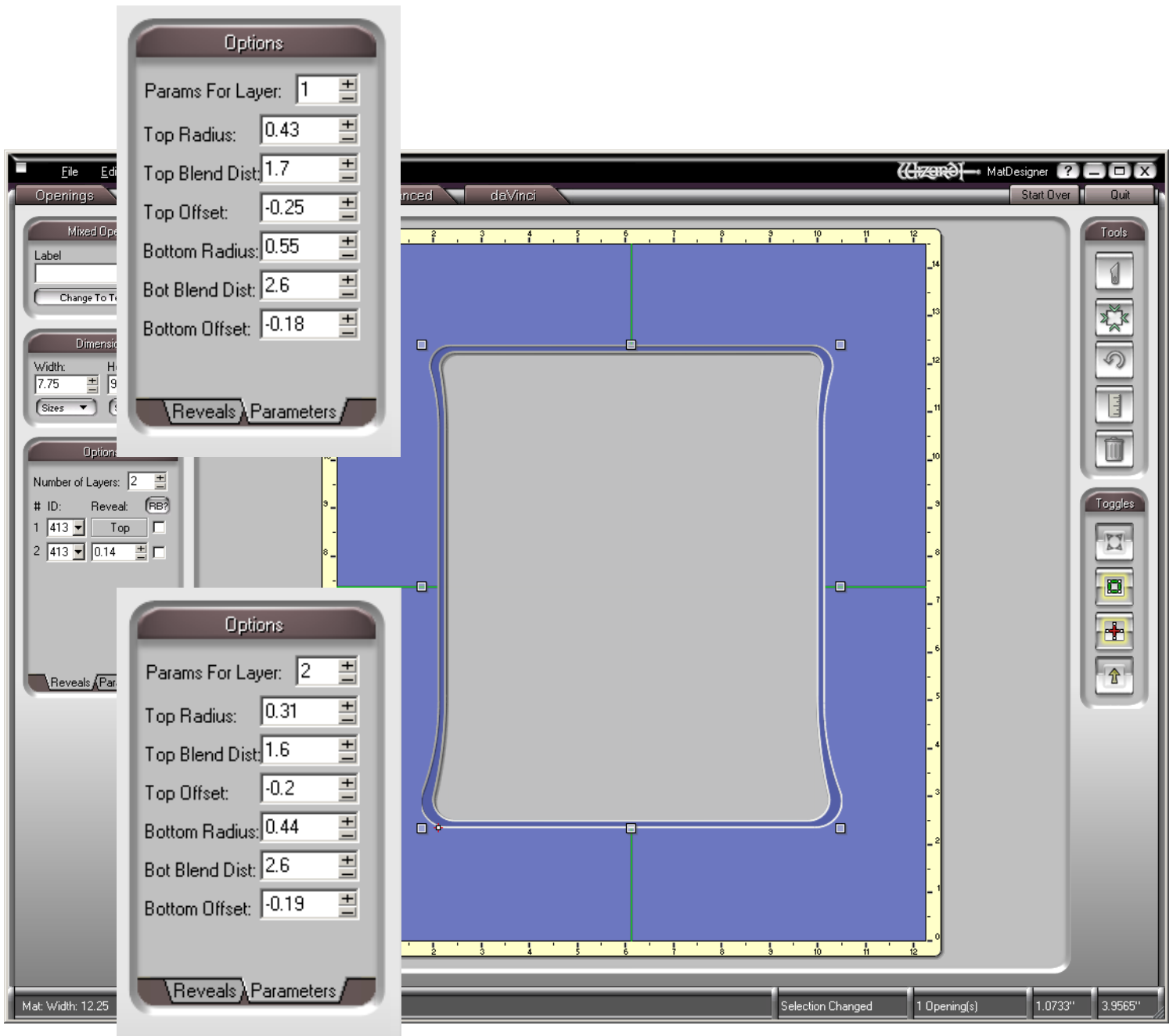
Both layers of this mat are 314 Camelback Flare.

There are lots of choices in this template. You may choose the camelback aspect of this template, the flared corners, or combine them with or without the chamfered corners.

A great variation here is to eliminate the flares at the top corners. This gets away from the decorative cutting always being symmetrical in all four corners. Take the design into PathTrace, explode the design, delete the decorative parts at the top corners, and rejoin the design.

By: Brian Wolf, CPF, GCF • Artistry Ambassador for Wizard International, Inc. Copyright October 08

4600 116th St SW • P.O. Box 66 • Mukilteo, WA 98275 • Phone (888) 855-3335 • Fax (425) 551-4350
Visit our Web site www.wizardint.com



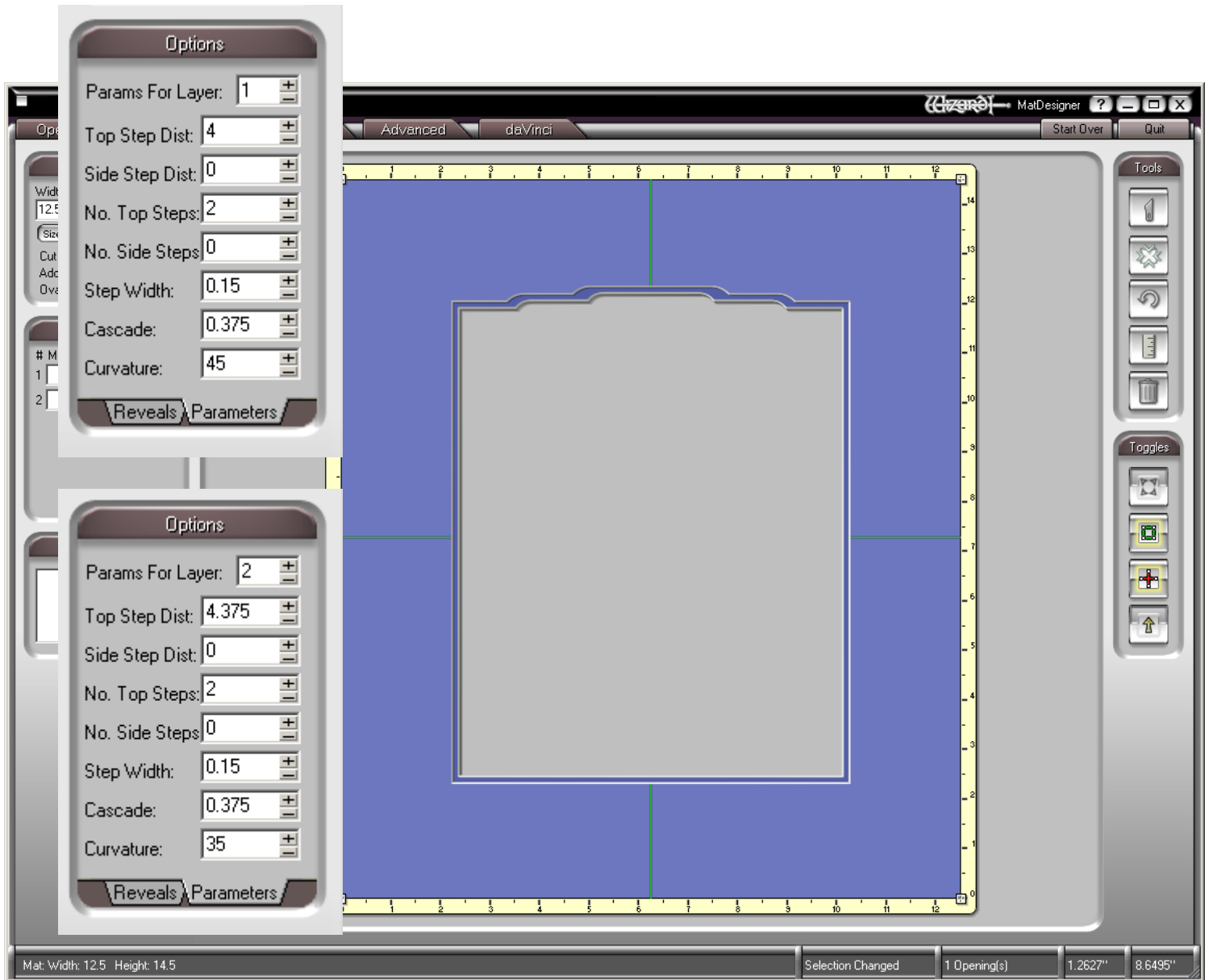
Both layers of this mat are 413 Nouveau Pillar.

This template lends itself very nicely to traditional pieces because of the calligraphic swirls in the corners when you set the parameters differently for each layer.

A variation is to set the parameters for the top elements to 0. The top corners will then be rectangular. For those designs where you want a little less drama at the bottom corners, enter the parameter values for the top into the fields for the bottom.

By: Brian Wolf, CPF, GCF • Artistry Ambassador for Wizard International, Inc. Copyright October 08

4600 116th St SW • P.O. Box 66 • Mukilteo, WA 98275 • Phone (888) 855-3335 • Fax (425) 551-4350
 Visit our Web site www.wizardint.com



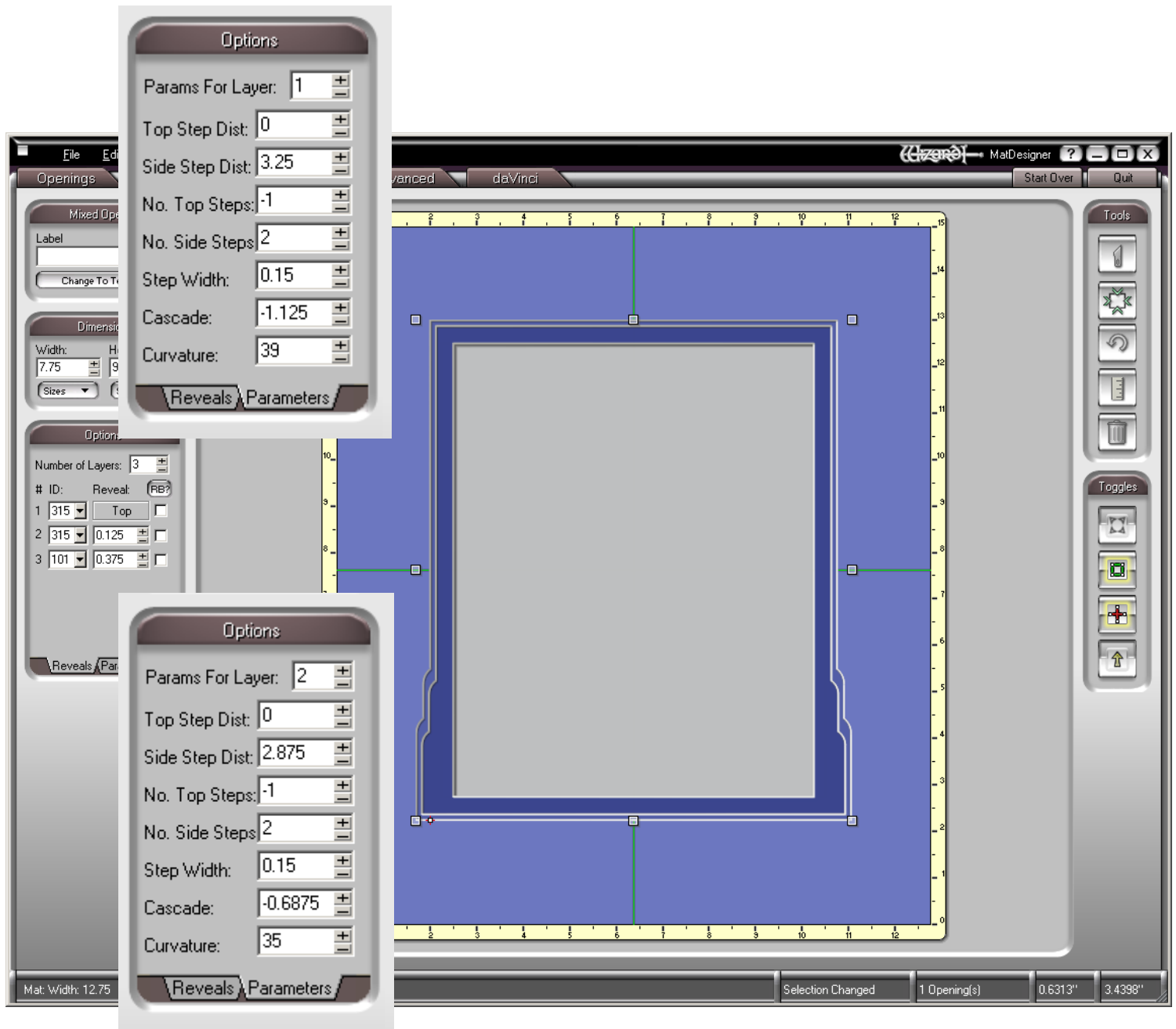
Both layers of this mat are 315 Deco Showcase.

One option with the parameters of this template is to leave the decoration only on the top and keep the sides clean. When you do this though, there is a radius at each of the top corners that is often incompatible with the design. In this example, they were removed.

To remove them, take the design into PathTrace, explode the design, delete the round parts at the top corners, then rejoin the design.

By: Brian Wolf, CPF, GCF • Artistry Ambassador for Wizard International, Inc. Copyright October 08

4600 116th St SW • P.O. Box 66 • Mukilteo, WA 98275 • Phone (888) 855-3335 • Fax (425) 551-4350
 Visit our Web site www.wizardint.com



The top two layers of this mat are 315 Deco Showcase and the innermost layer is a rectangle.

Notice that the **Number of Top Steps** field is -1. If it is 0 then there will be a radius at the top corners. For this design we want rectangular top corners.