

Adding a V-Groove Around an Opening

Once the opening is on the Edit screen, click on it to select it.

Click the **Openings** tab at the top left.

Click the **Add V-Groove** button at the lower left

The **V-Groove Offset** dialog box pops up asking how far away from the opening you'd like the groove to be.

Enter a distance and click **OK**.

The V-Groove appears around the opening, the specified distance away from it.

If you do not select an opening, when you click the **Add V-Groove** button, a groove appears in the middle of the screen at the default size.

Selecting an opening, or group of openings, for that matter, brings up the **V-Groove Offset** dialog box that allows you to specify the spacing.

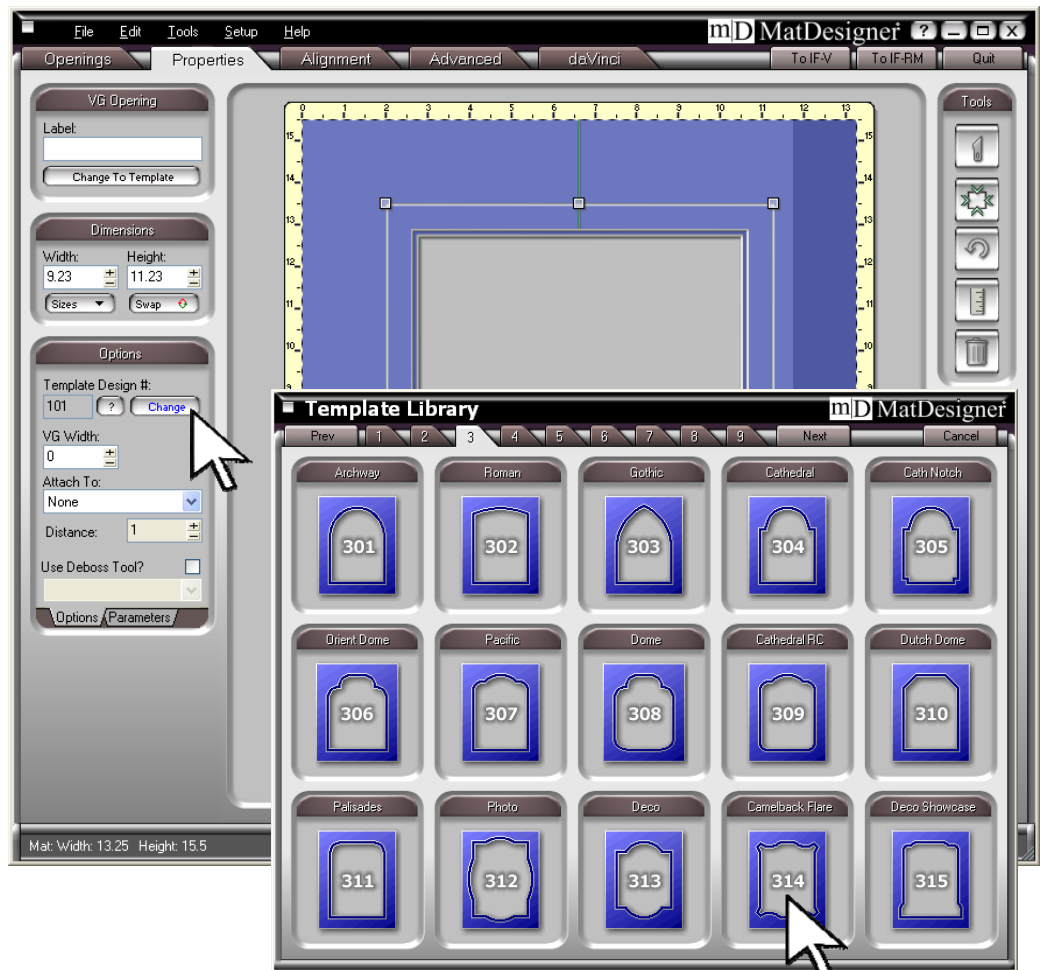
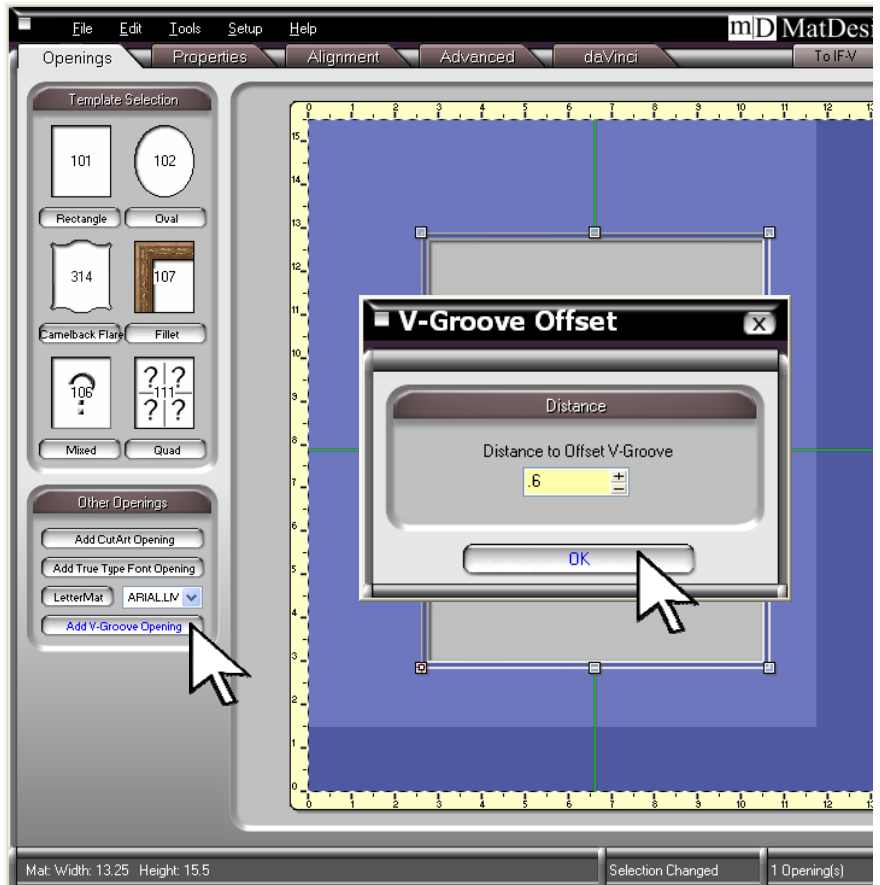
If this is the design you want, cut the mat now.

Changing the Shape of V-Grooves

Select the V-Groove.

Click the **Change** button under Options on the left of the Edit screen.

This will bring up the **Template Library**. Find the template shape you want and click on it. The V-Groove will become that shape.



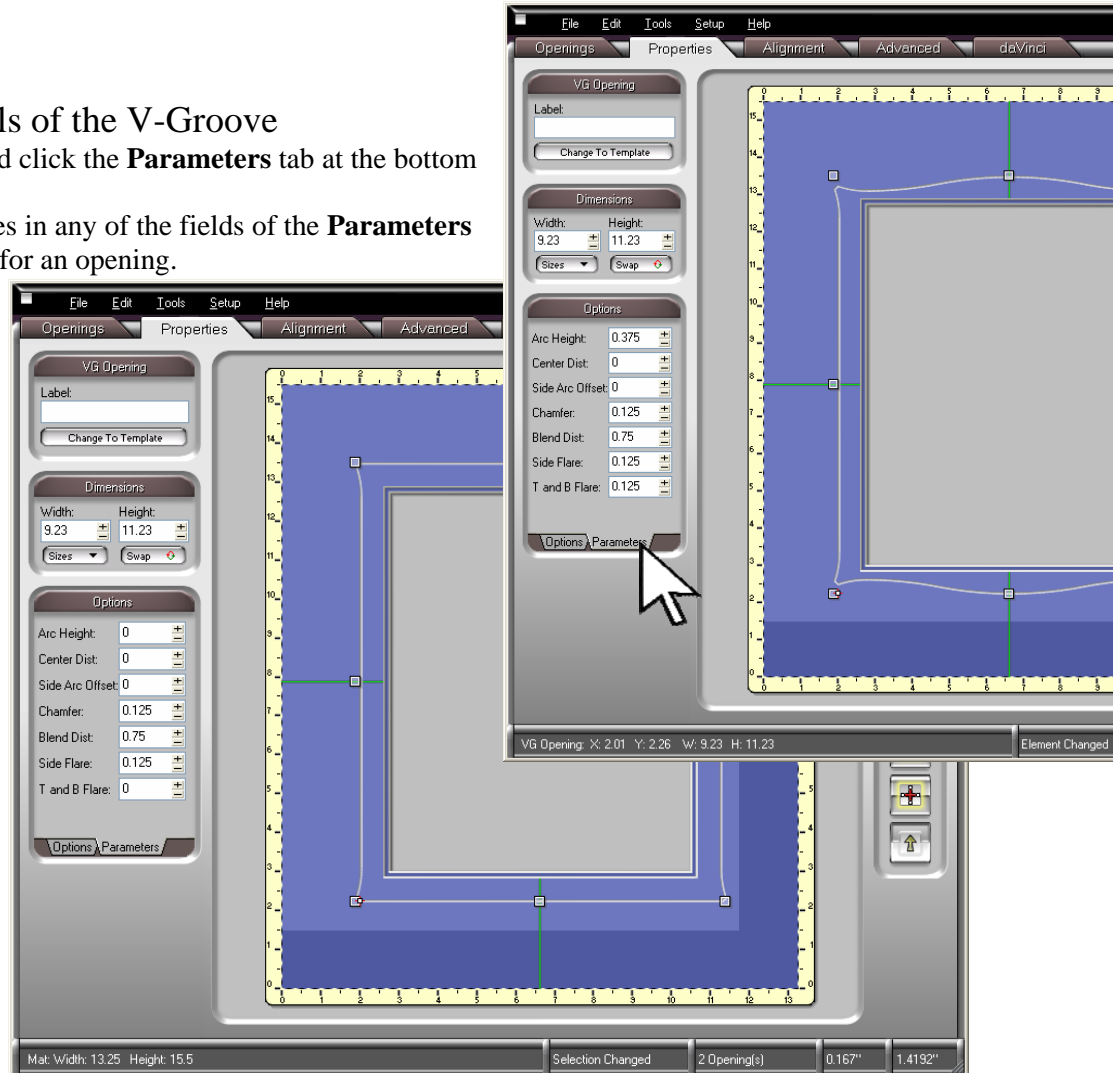
Refining the Details of the V-Groove

Select the V-Groove and click the **Parameters** tab at the bottom left under **Options**.

Change any of the values in any of the fields of the **Parameters** table just as you would for an opening.

As you are setting these Parameter values for V-Grooves, you do not need to be quite so worried about making them too small.

Grooves are cut about half as deep as openings and the blade is able to make sharper turns more easily at these shallow depths.

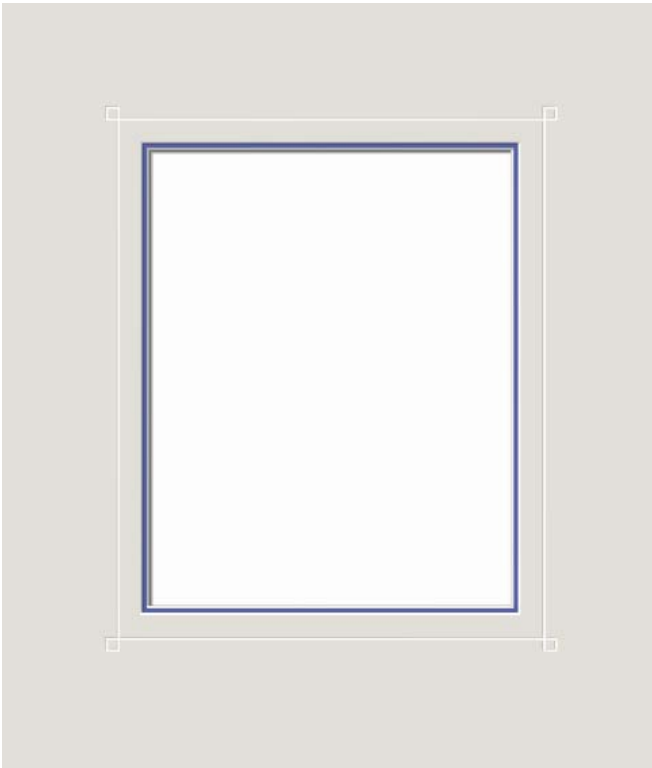


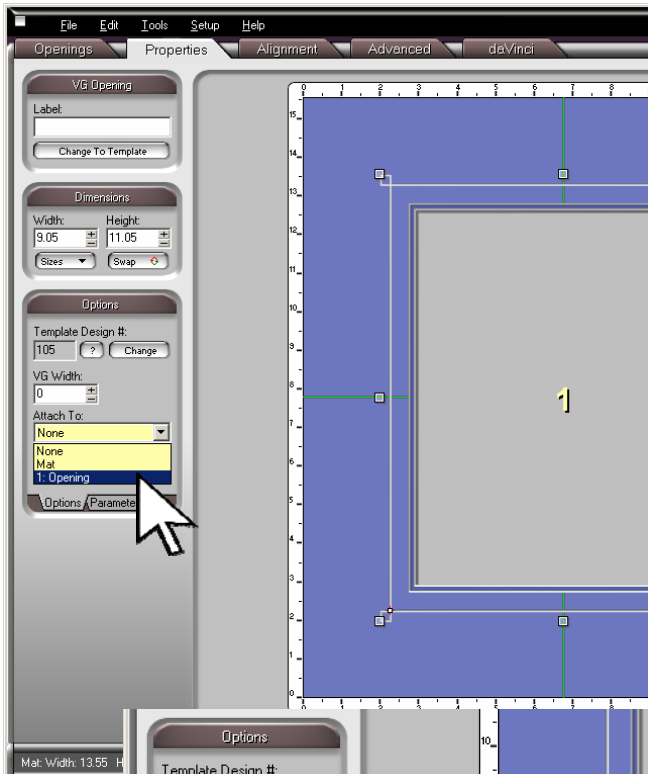
Changing the Size of Designs with V-Grooves

You have just designed a mat with a decorative V-Groove you like. You have made test cuts, everything works nicely, and it is a design you will probably use again and again.

In the past, to change the size of the opening, you had to take notes on the groove's parameters, delete it, re-size the opening, then rebuild the V-Groove.

There is a feature in MatDesigner™ now that makes V-Groove designs much easier to alter.





Attaching V-Grooves to Openings

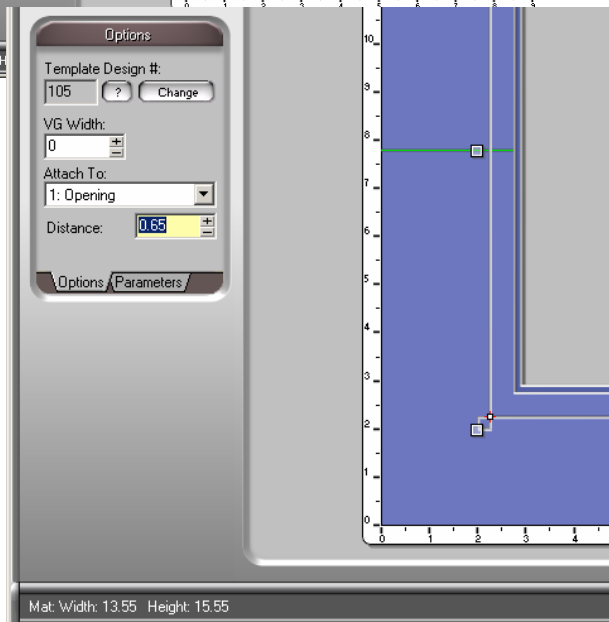
Select the V-Groove.

Click on the **Properties** tab.

Under **Options** at the left, there is an **Attach To** field. Click on the drop down arrow and there will be several choices.

Select **1: Opening**. Note that the software inserts a numeral 1 in the middle of the opening.

The V-Groove is now attached to the opening. When you change the size of the opening, the groove's size will change, too, maintaining its spacing with the opening.



Changing the Spacing

When you attach the V-Groove to the opening, the spacing will default to 1 inch.

You will probably want to change the spacing in the **Distance** field below to suit your design.

Either enter a new distance or click the + and - buttons beside the field.

The V-Groove's spacing will change and it will remain parallel every step of the way.

This is so handy, you may begin to ignore the **V-Groove Offset** dialog box, attach every groove, and adjust the spacing using the **Distance** field.

Using This Design Again

Save the design in an *Idea* folder

The next time you want to use it, all you will need to do is change the opening size. The groove's size will change automatically and the design will be ready to cut.

Cutting Mats with V-Grooves

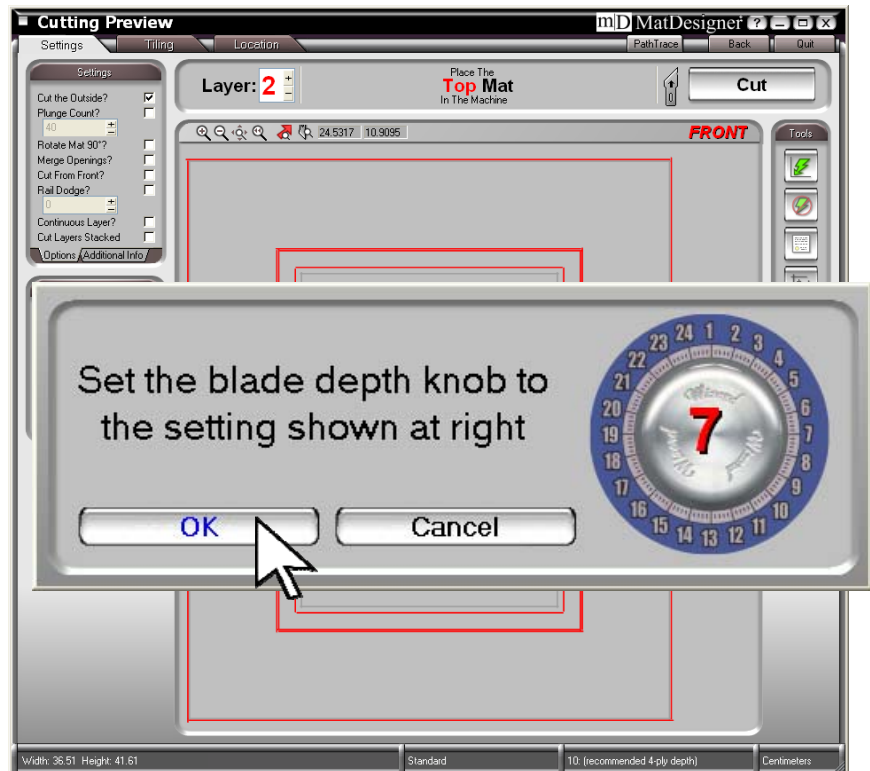
The Wizard cuts mats with V-Grooves from the front. There is a reminder in the upper right corner of the screen that says **Front** in red letters.

There are no special changes to make, just follow the instructions on the screen.

When you click the **Cut** button, a blade depth reminder will pop up telling you to lower the blade depth to cut the V-Groove.

Once you have done this, click **OK** and the groove will cut.

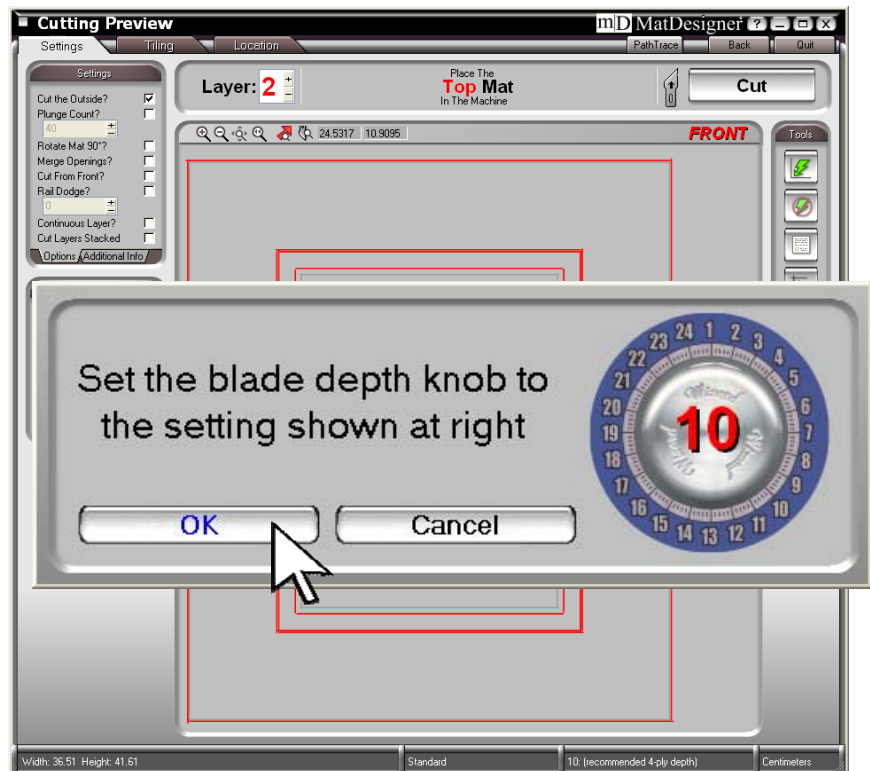
As the V-Groove cuts, it is prudent to watch and brush all of the pieces away as they are cut free. They could become stuck under the footblock and dent the matboard.



After the V-Groove has cut, another blade depth reminder will pop up telling you to raise the blade depth to cut the opening and the outside.

Once you have adjusted the blade depth, click **OK** and the opening and the outside will cut.

Through the entire cutting process, the clamps remain engaged so that the groove, the opening, and the outside will line up perfectly with each other.



Merging Decorative Shapes Into V-Grooves

Shaped grooves are among the most universally useable decorative elements because they are so understated. The templates are probably the most obvious way to change a groove's shape, but the possibilities with adding merged shapes are endless.

Start with an opening and a groove. Bring in another groove by clicking the **Add Vgroove Opening** button.

Change its shape and size under the **Properties** tab.

In this example it is a triangle – Template 504, and it is 11cm x 10cm high.

Drag the triangle towards the center and it will snap to the center line.

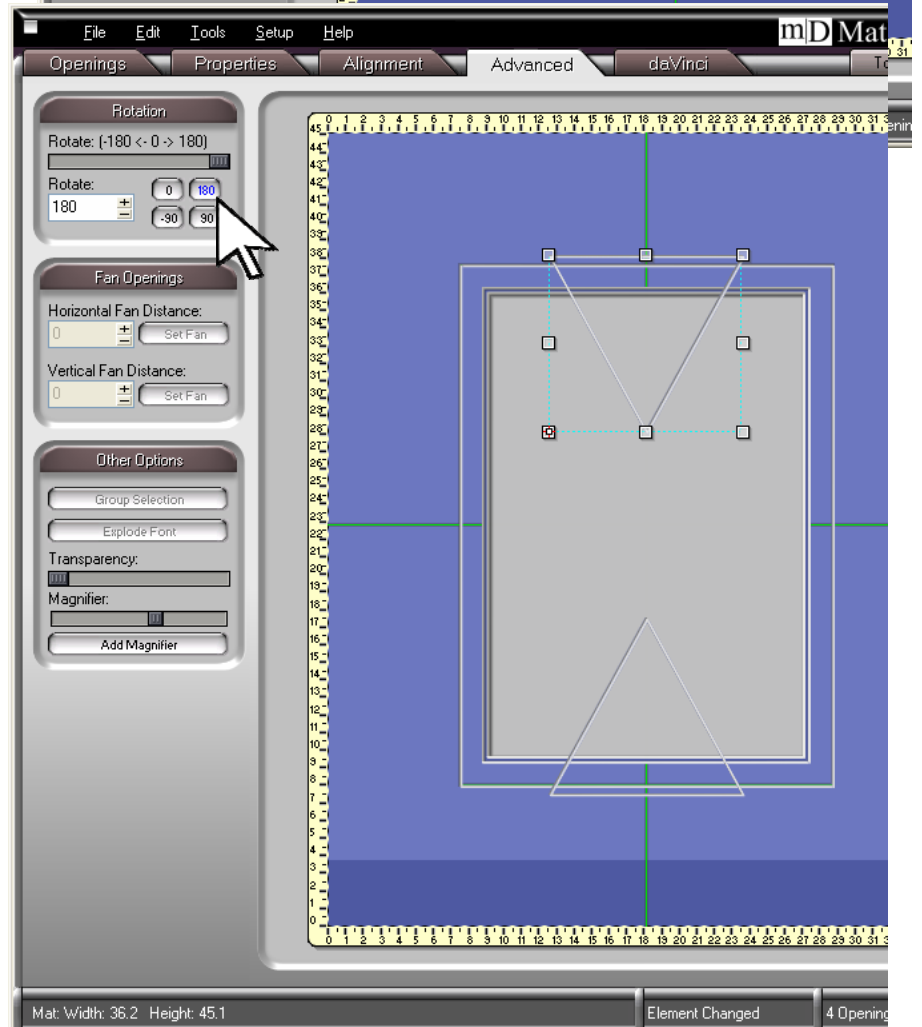
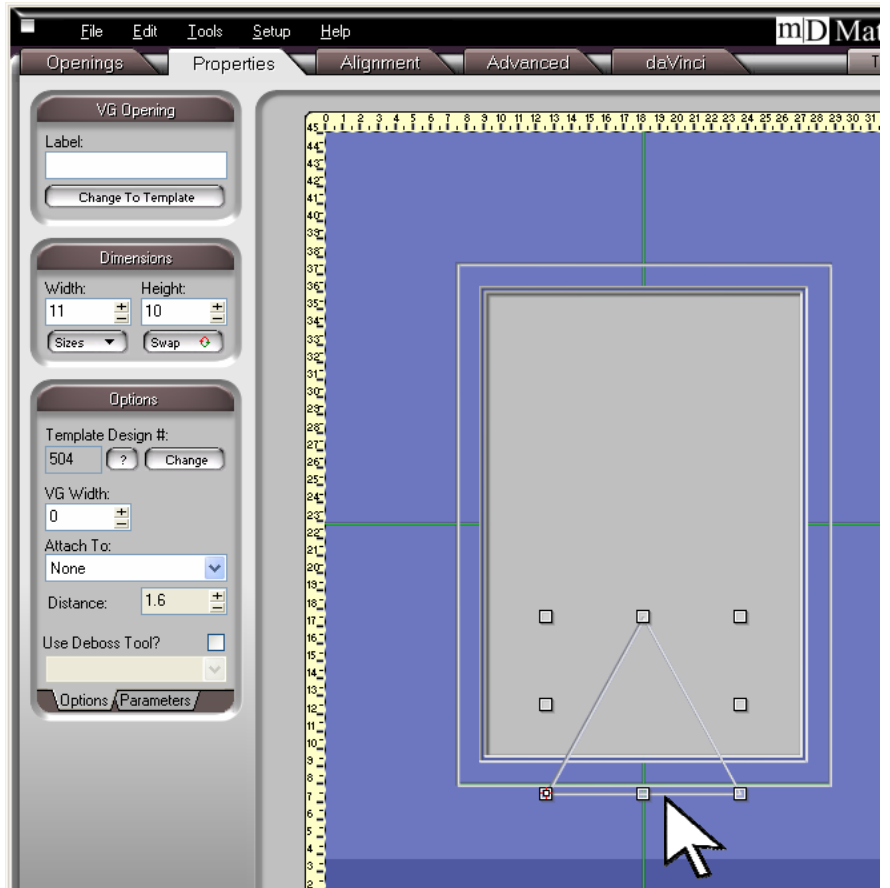
In this example, the triangular groove drops 5mm below the rectangular groove.

Snap the triangular groove up so it is on the rectangular groove, then use the arrow keys.

Click the Down arrow five times and it will be 5mm below the rectangular groove.

Bring in another triangular groove either by repeating the steps above, or by copying and pasting the one that's already there.

Click the **Advanced** tab and rotate the new triangular V-Groove 180 degrees. Snap it to the center then use the arrow keys to position it 5mm above the center of the top of the rectangular groove.



Merging the Grooves

Click the **Advanced** tab.

Select all three of the grooves - the two triangles and the large rectangular one.

Click the **Group Selection** button.

The program will show only the perimeter of the grouped items.

V-grooves are an extraordinarily versatile design element and they improve almost any picture.

Framers twenty ago used to say that they would use groove designs on just about every mat.

They always wished, though, that grooves were easy to do, and that they came out perfect every time.

Those wishes are only a couple of clicks away for you.

Can you imagine their excitement to know how easy it is to do any shape, too?

