

Designing Captions Using the Debossed Fonts

Ever since the Wizard™ could cut letters, the quest has been to cut them smaller and smaller. Even when the tight curves were engineered out of the letters or cut as V-Grooves, the minimum height was still over an inch.

Debossing presses into the matboard. There is no cutting, so the minimum size is about three-eighths of an inch.

There are four fonts designed for debossing. **Bristol** is a traditional serif typeface. **Vienna** is contemporary sans serif typeface. **Ariadne** is a flourishing italic typeface. All three of these fonts deboss as single lines. **Thorndike** is a Roman typeface and it debosses as a double line so there is width variation in the letter strokes. It looks best a little larger.

There are punctuation marks in these debossed fonts as well.

Adding Debossed Letters

Add debossed letters to the mat design like you would add any other LetterMat opening. Click the **Openings** tab at the top of the edit screen.

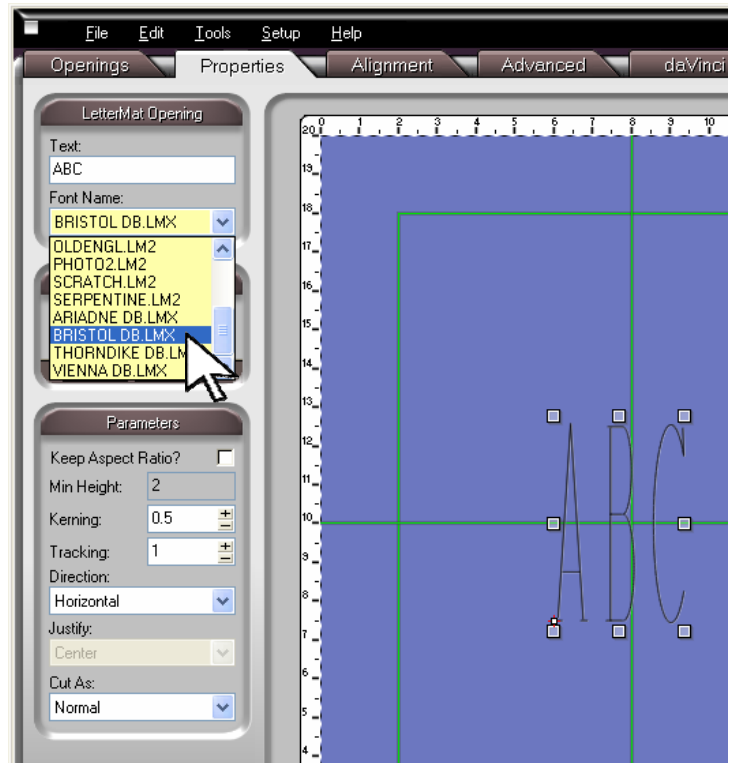
Then click the **LetterMat** button under **Other Openings** at the bottom left.

The default LetterMat will appear. To change the font, click the **Properties** tab then click the drop down arrow beside the **Font Name** field.

Scroll down and click on the one you want.

At the bottom left under **Cut As** it reads **Normal**. This means that it will cut as it was designed. It does not mean that it will cut as a normal bevel.

All the debossed fonts were set to deboss using the thin tool. If you would like to select one of the wider tools, click the drop down arrow beside **Normal** and select the tool width you want. This field will then reflect your choice.



Altering the Caption

Type the words you want into the **Text** box at the top.

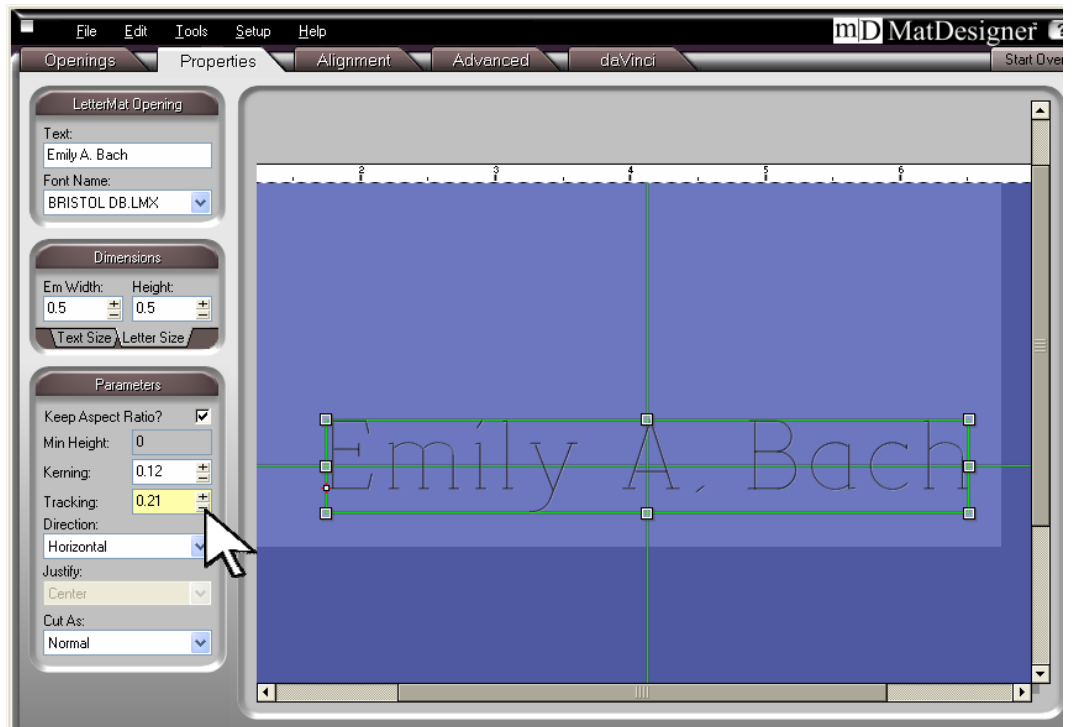
Note that there are now some punctuation marks.

Change the **Height**.

A suggested minimum height is 0.38 inch.

Click the **Keep Aspect Ratio** button. This keeps the letters in their intended proportions.

You can condense the letters or expand them, but this is a good place to start.



Refine the Spacing

Kerning changes the size of the space between the letters.

Tracking changes the size of the space between each word.

If you click the + and – buttons beside them, the values change a sixteenth of an inch with each click. (One millimeter with each click in metric)

Hold the **Atl** key on the keyboard as you click the + and – buttons and these values change 0.01 inch per click. (0.2mm per click in metric)

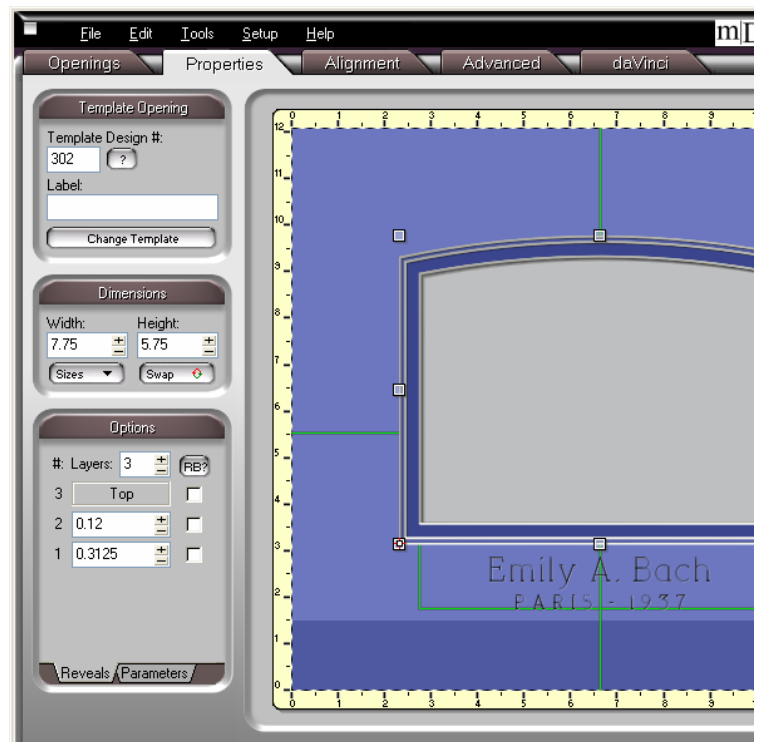
Zoom in on the caption so you can get a closer look as you make these changes.

Click on **Tools** at the top, click on **Zoom**, then select the zoom level you want.

An easier way is to hold the **Control** key on the keyboard and click the + key to zoom in. You can click it up to four times to get 150%, 200%, 250%, or 300% magnification. Scroll bars appear at the bottom and on the right so you can move the view around the entire design.

Hold the **Control** key and click the – button to zoom back out.

You can add more captions and openings. Use the Alignment buttons and guide lines to align and space the debossed items just as you would for every other item in the design.



Designing Debossed Captions Using LetterMat Fonts

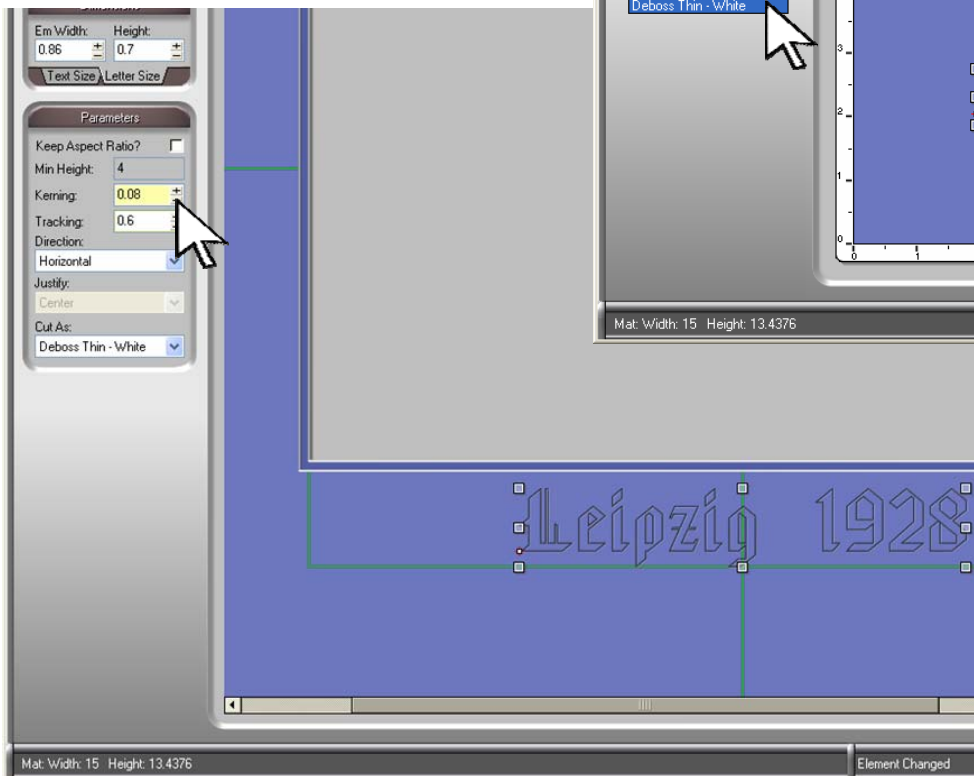
Any LetterMat font can be set to deboss.

Design the caption.

Note that the height of the letters is set to 0.7 inch which is far less than the suggested minimum height for this LetterMat font.

To set the letters to deboss, click the **Properties** tab and click the drop down arrow by the field under **Cut As** on the left.

Select one of the three deboss widths at the bottom.



Refining the Spacing

Spacing these small letters is critical. Zoom in for a closer look.

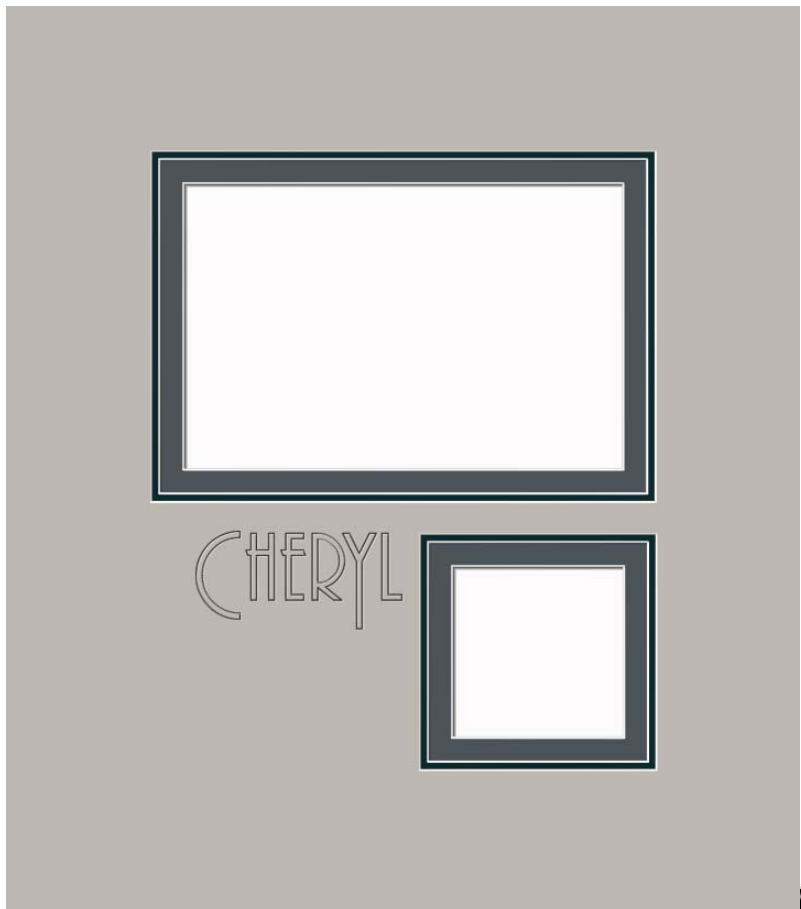
Kerning is the space between each letter and **Tracking** is the space between each word.

Hold the **Alt** key on the keyboard when you adjust these fields.

Now, as you click the + and – buttons, the values will move 0.01 inch per click instead of the usual sixteenth inch per click. In metric the value will change 0.2mm per click instead of the usual 1mm per click.

This gives you much more precision as you refine the spacing of these small letters.

All of the alignment tools work with debossed items just as they do with all other items to center and space the caption and the opening.



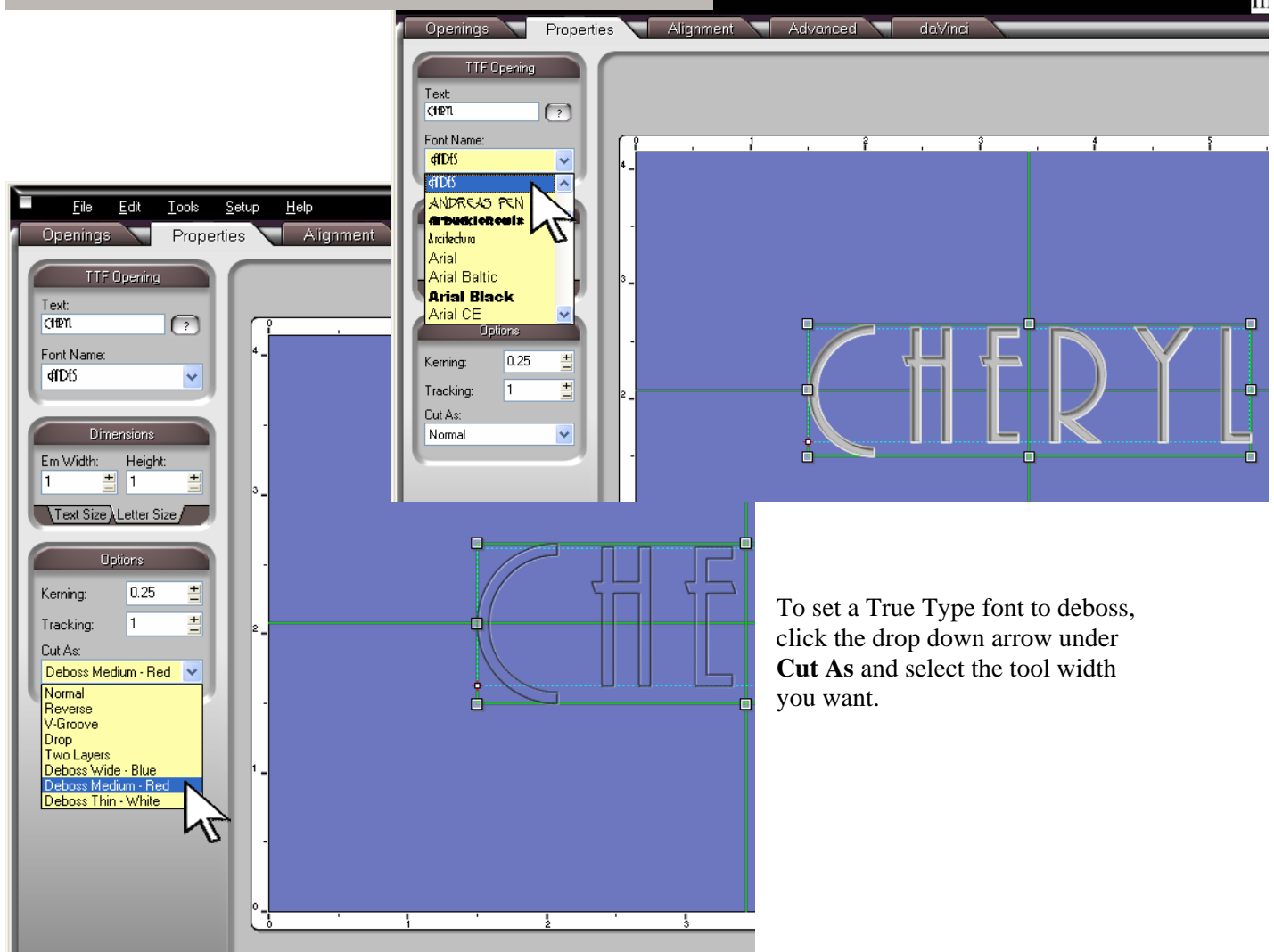
True Type Fonts

There are hundreds spectacular fonts you could load into your Windows font directory. The software can manipulate them, but the blade cannot always cut them.

Remember that they were designed with very little consideration given to how they would cut. However the details and sharp corners are not much of a problem with debossing.

Click the **Add TrueType Font Opening** button under the **Openings** tab.

Click on the **Properties** tab to edit. When you click the drop down button by **Font Name**, you can choose from all the fonts in the computer's Windows directory. The font in this example is from a disk of fonts.

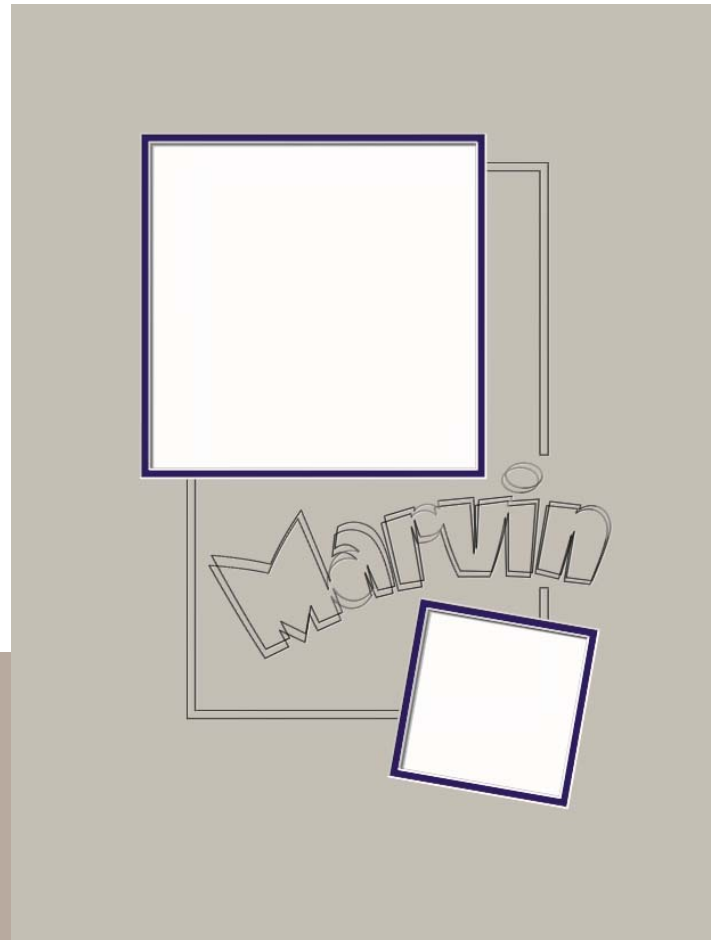


To set a True Type font to deboss, click the drop down arrow under **Cut As** and select the tool width you want.

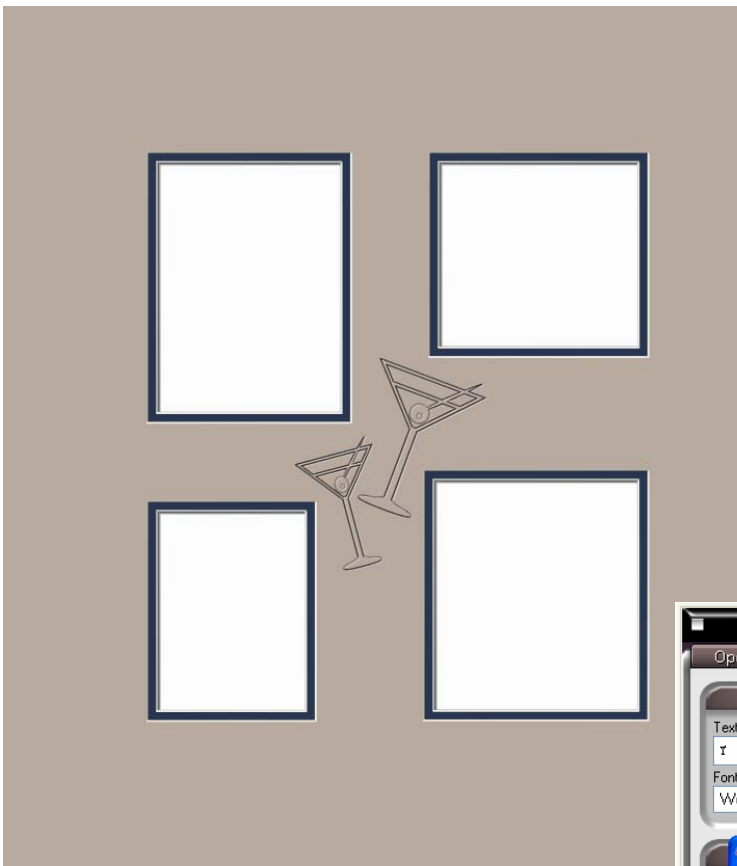
Don't forget about the other design tools in MatDesigner™.

Here the letters were exploded, fanned, and merged. Then rotate the grouped caption. Copy and paste it to get a duplicate. Rotate it a degree or two more and offset it just a few clicks to get this energetic effect.

The double V-Groove with the gap in it is template 706. Set the **Nameplate Height** and **Width** parameters to 0. Make the opening very small and make the **Offset** parameter large. Then change the size and placement of the gap with the appropriate parameters.



There are many things other than letters in some of the fonts. These martini glasses came from the Webdings font that is on every computer. There are many surprises in this particular font that you cannot just type in.



To find all these things, click the question mark to the right of the **Text** box under the properties of the TTF Opening. This brings up the character map. Click on the item you want, click the **Select** button below, then click the **Copy** button next to it. Paste it into the **Text** box.

